

### WHY REUSE?

Reuse systems are gaining momentum in Canada. Their appeal rests on the many benefits they potentially offer. Reuse **reduces waste** sent for disposal; can offer **cost savings**; and **drives down energy and resource use** by displacing the need to manufacture new items from raw materials. Reuse includes both refill and return systems. Return involves a business-run system where containers are returned, washed and reused for the same purpose. Refill refers to consumer-owned and managed containers, such as bring-your-own programs.

[www.nzwc.ca](http://www.nzwc.ca)

## CHEP CANADA – TRANSPORTATION PACKAGING



### PARTNERS

Customers include manufacturers, producers, growers, and retailers.



### LOCATION

Across Canada, headquartered in Mississauga, Ontario



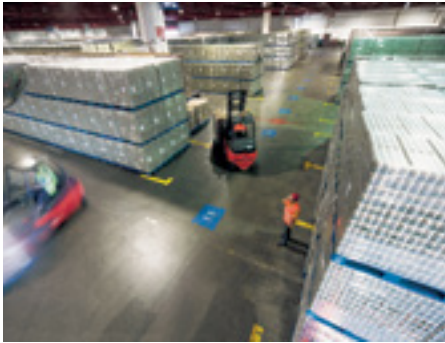
### SECTOR

Logistics, fast-moving consumer goods, food and beverage, retail and manufacturing.



### PRODUCT CATEGORY

Transportation packaging



### THE COMPANY

**CHEP Canada** is part of Brambles Group, which operates in approximately 60 countries around the world, employs approximately 13,000 people and owns nearly 350 million pallets, crates and containers through a network of more than 750 service centres, supporting more than 500,000 customer touch-points for global brands.

### IN 2023, CHEP CUSTOMERS' GLOBAL SUPPLY CHAINS BENEFITED FROM:

1.2 million tonnes of waste avoided

More than 4,000 megalitres of water saved

3.1 million cubic metres of wood and 3 million trees saved

1.9 million tonnes of CO<sub>2</sub>e reduction

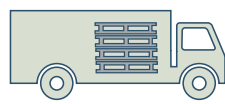


### DID YOU KNOW?

- CHEP's parent company, Brambles, has set sustainability targets to achieve by 2025. Achievements to date include sourcing 100% of its timber from certified sustainable sources, setting validated science-based climate targets and 83% of its in-scope service centres divert product waste (such as lumber waste) from landfill.
- TIME Magazine has recognized Brambles as one of the most sustainable companies in the world.<sup>1</sup>

<sup>1</sup> Time Magazine 2024 World's Most Sustainable Companies

## KEY CHARACTERISTICS: TRANSPORTATION PACKAGING



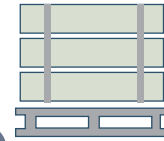
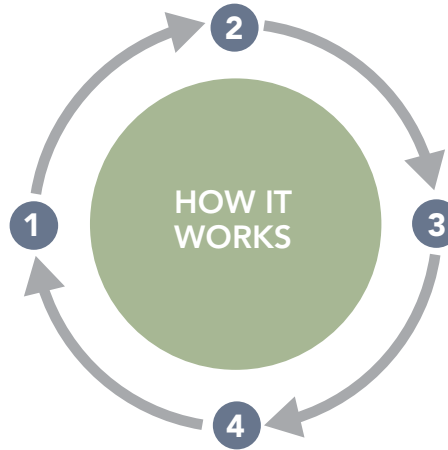
### Collection & Reverse Logistics:

Customers pick up pallets from CHEP service centres or pallets are delivered to customers based on a delivery schedule.



### Rental:

The customer orders the number of pallets they need from CHEP service centres via online portal myCHEP, and when required.



### Pallet Use:

Customers load the pallets with their products and sends them to their customers. The customer informs CHEP that the goods have been shipped via the online portal myCHEP.



### Return:

CHEP works with retailers to efficiently return the pallets to one of their service centres where they are checked and repaired if necessary, before transferring the equipment to another participant for a new trip.



## FROM SOLUTION TO PRACTICE

CHEP's share, repair, and reuse business model<sup>2</sup>, referred to as pooling, moves pallets in a closed loop circular supply network among manufacturers, retailers, and service centres.

- **Rigorous Inspection and Maintenance:** CHEP ensures pallet quality by conducting regular inspections and maintenance to identify and address issues.
- **Data-Driven Optimization:** Data analytics are leveraged to analyze usage patterns and demand forecasts to optimize distribution and allocation. The data-driven approach allows for efficient asset deployment.
- **Collaborative Partnerships:** CHEP works with customers and partners to identify opportunities to optimize the flow of goods, as well as to provide technical support with automation, collaborative research, support in reducing carbon emissions, and support in setting sustainability goals.

<sup>2</sup> <https://www.chep.com/ca/en/why-chep>



## POLICY CONTEXT

Baseline data collection by the **Canada Plastics Pact** indicates that there is already a significant amount of reusable packaging employed by the IC&I sector, for example pallets, totes, and crates. Deepening support for reuse in the business-to-business (B2B) sector becomes easier with significant activity already underway. Growing reuse in the ICI sector takes the pressure off local governments to ban and/or find processors or end markets for these materials.

The Province of BC's discussion paper **Preventing Waste in British Columbia: Non-Residential Packaging & Paper Products** touches on reuse for B2B in their policy approaches.

## OTHER COMPANIES TO CHECK OUT

- **CHEP Pallecon North America** is a part of the Brambles Group. It provides intermediate bulk container (IBC) solutions, serving the food, beverage, personal care and general manufacturing industries.
- Companies offering reusable pallet wrap include Canada-based **EnviroWrapper** and US-based **Galaxy Pack**